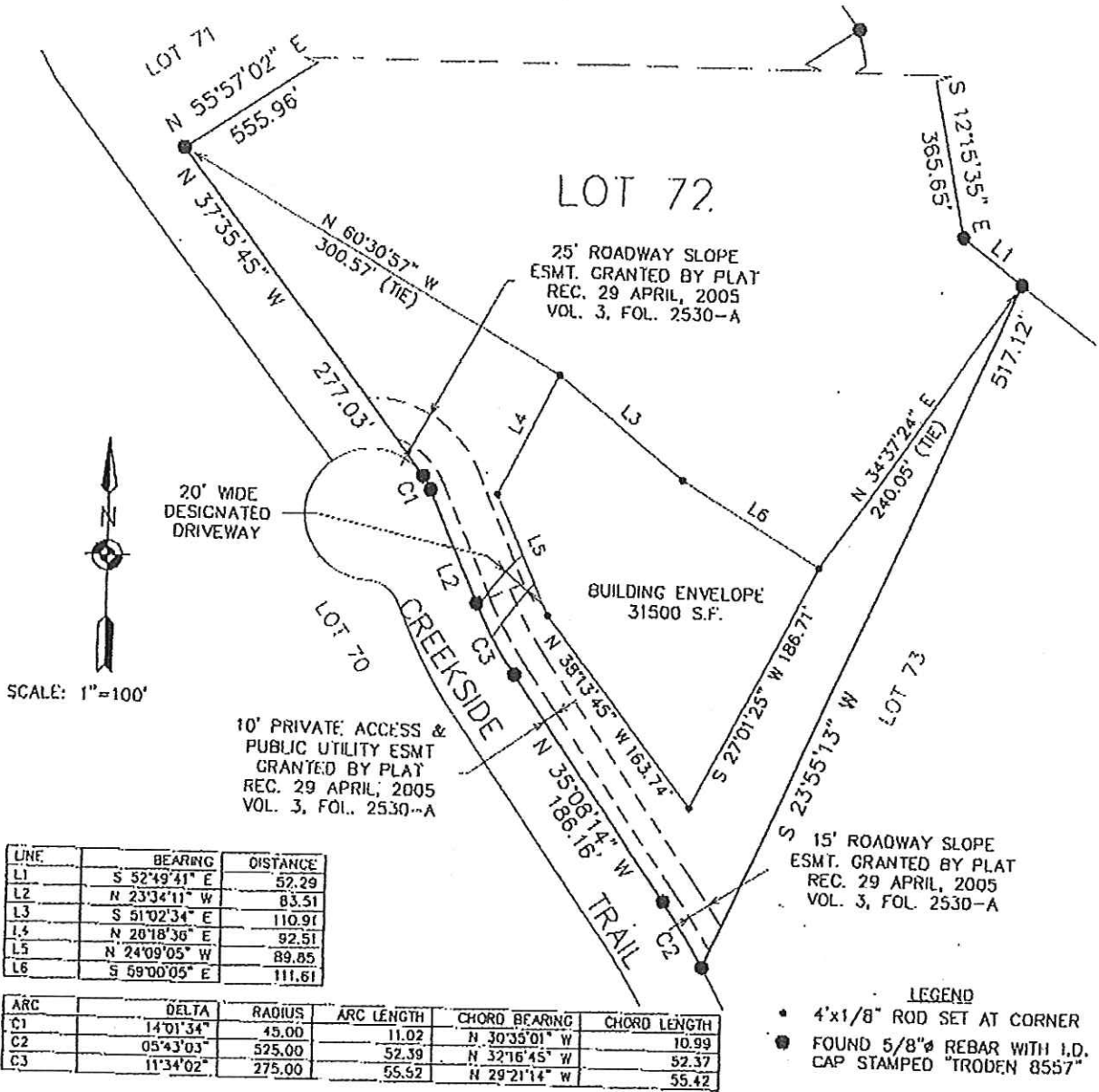


EXHIBIT B
 SHOWING SUPPLEMENTAL DECLARATIONS TO
 LOT 72, SAN PEDRO OVERLOOK SUBDIVISION, PHASE II
 SANDOVAL COUNTY, NEW MEXICO
 JULY, 2005



LINE	BEARING	DISTANCE
L1	S 52°49'41" E	52.29
L2	N 23°34'11" W	83.51
L3	S 51°02'34" E	110.91
L4	N 20°18'36" E	92.51
L5	N 24°09'05" W	89.85
L6	S 59°00'05" E	111.61

ARC	DELTA	RADIUS	ARC LENGTH	CHORD BEARING	CHORD LENGTH
C1	14°01'34"	45.00	11.02	N 30°35'01" W	10.99
C2	05°43'03"	525.00	52.39	N 32°16'45" W	92.37
C3	11°34'02"	275.00	55.62	N 29°21'14" W	55.42

LEGEND
 • 4"x1/8" ROD SET AT CORNER
 ● FOUND 5/8" REBAR WITH I.D. CAP STAMPED "TRODEN 8557"

SANDOVAL COUNTY
 200531148
 Book-408 Page- 31148
 6 of 7
 08/16/2005 03:57:33 PM

Oden & Associates
 surveyors engineers planners
 P.O. BOX 1976
 200 U.S. ROUTE 66 E.
 MORAITY, NM 87035
 (505)832-1425
 (505)832-6996 (FAX)

Designed TRO	Date	Drawn MAV	Date	Checked	Date	Date 7/27/05	Sheet 1 of 2
Job # S2004-221		File LOT DECS	SPO - 2	COMP. FILE SPOPH2.PRJ		DWC NAME SPOVERLK-L72.DWG	