

EXHIBIT B
 SHOWING SUPPLEMENTAL DECLARATIONS TO
 LOT 71, SAN PEDRO OVERLOOK
 SUBDIVISION, PHASE II
 SANDOVAL COUNTY, NEW MEXICO
 JULY, 2005

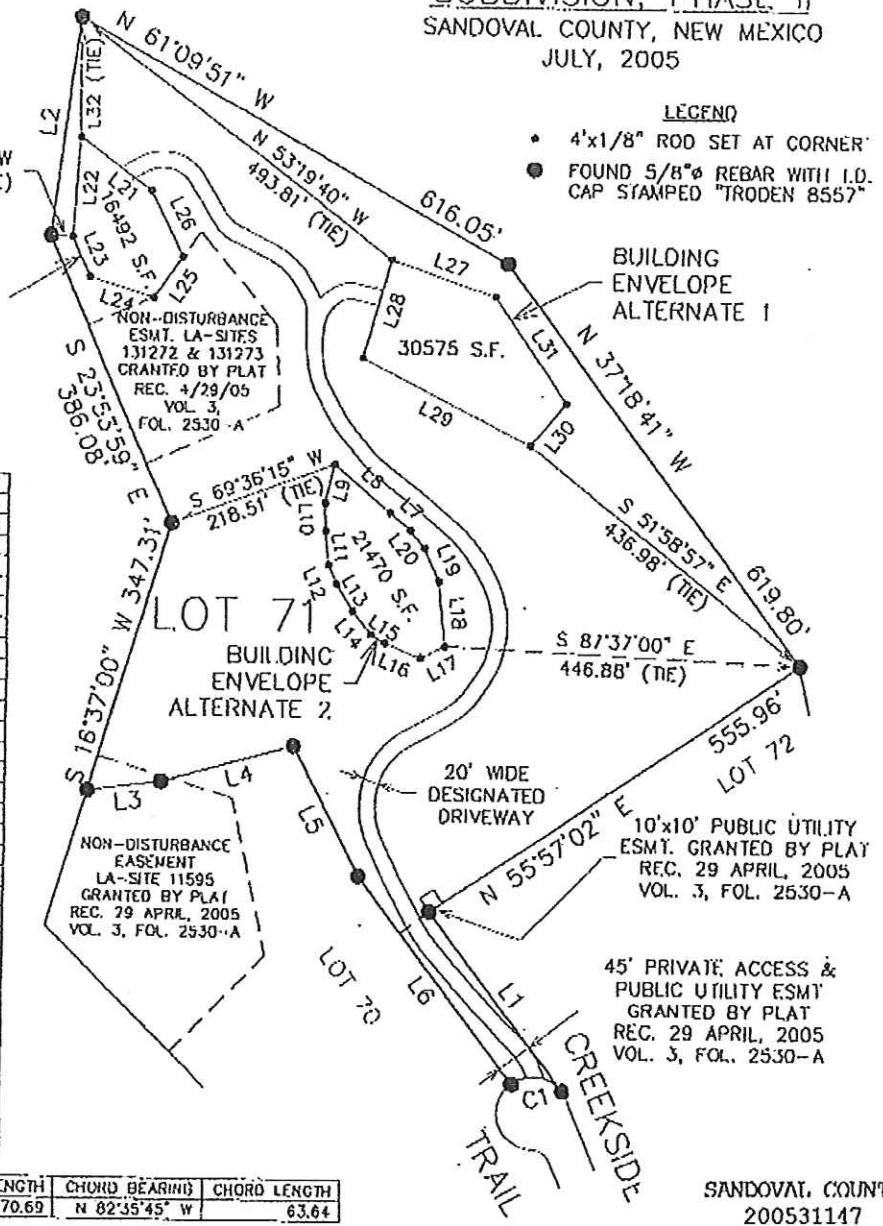


SCALE: 1"=200'

LINE	BEARING	DISTANCE
L1	S 37°35'45" E	277.03
L2	N 07°03'32" E	273.32
L3	S 82°29'17" W	91.45
L4	S 74°18'23" W	171.91
L5	N 28°04'39" W	181.65
L6	N 37°35'45" W	320.34
L7	S 49°15'04" E	33.17
L8	S 50°20'46" E	92.28
L9	N 14°02'36" E	49.99
L10	N 02°51'51" W	34.68
L11	N 05°49'45" W	42.65
L12	N 23°58'25" W	25.59
L13	N 32°17'20" W	38.93
L14	N 40°19'40" W	37.49
L15	N 59°02'52" W	20.21
L16	N 67°37'50" W	47.78
L17	S 62°47'41" W	34.10
L18	S 06°12'23" E	80.14
L19	S 23°38'25" E	45.37
L20	S 40°02'38" E	28.28
L21	S 53°38'58" E	110.42
L22	N 03°32'13" E	124.55
L23	N 24°27'19" W	53.44
L24	N 73°08'20" W	83.70
L25	S 35°04'25" W	61.60
L26	S 26°19'38" E	90.79
L27	S 71°27'30" E	136.16
L28	N 15°57'10" E	126.09
L29	N 63°26'47" W	234.39
L30	S 39°54'40" W	68.87
L31	S 34°44'54" E	158.09
L32	N 00°47'06" W	158.09

ARC	DELTA	RADIUS	ARC LENGTH	CHORD BEARING	CHORD LENGTH
C1	90°00'00"	45.00	70.69	N 82°35'45" W	63.64

- LEGEND**
- 4"x1/8" ROD SET AT CORNER
 - FOUND 5/8"Ø REBAR WITH I.D. CAP STAMPED "TRODEN 8557"



SANDOVAL COUNTY
 200531147
 Book-408 Page- 3114
 6 of 7
 08/16/2005 03:57:31

Oden & Associate
 surveyors engineers planners
 P.O. BOX 1976
 200 U.S. ROUTE 66 E.
 MONARTY, NM 87035
 (505)432-1425
 832-8946 (FAX)

Designed	Date	Drawn	Date	Checked	Date	Date	Sheet
TRO		MAV				7/27/05	1 of 2
Job #	S2004-221	File	SPO 2	COMP. FILE	SPOPH2.PRJ	DWG NAME	SPOVLRLK-1/1.DWG